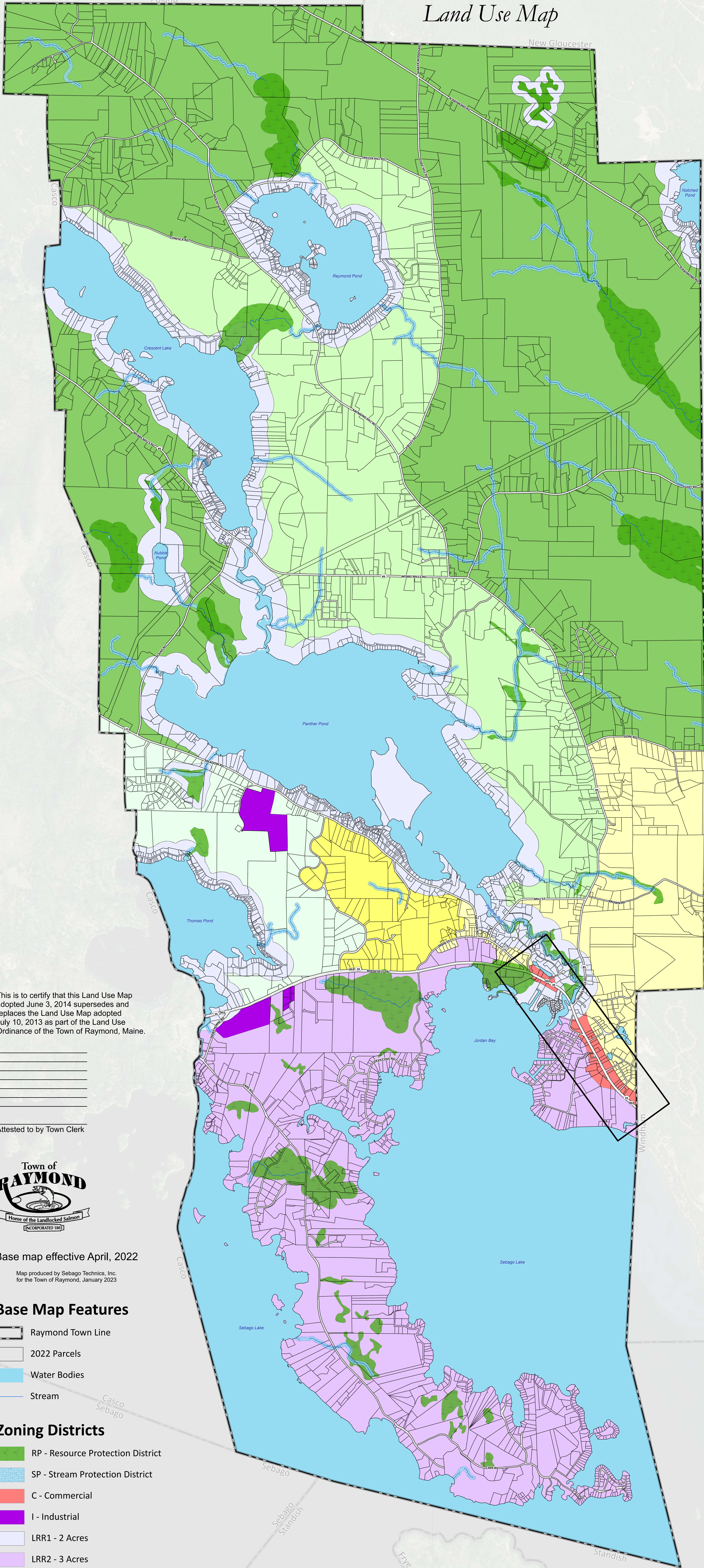


Town of  
**Raymond, Maine**

*Official  
Land Use Map*



The depiction of the Shoreland Districts on the Land Use Map of the Town of Raymond are illustrative of the general location. The boundaries of these districts shall be determined by measurement of the distance indicated on the map from the normal high-water mark of the water body or upland edge of wetland vegetation, regardless of the boundary shown on the map.



This is to certify that this Land Use Map adopted June 3, 2014 supersedes and replaces the Land Use Map adopted July 10, 2013 as part of the Land Use Ordinance of the Town of Raymond, Maine.

\_\_\_\_\_

\_\_\_\_\_

\_\_\_\_\_

\_\_\_\_\_

\_\_\_\_\_

Attested to by Town Clerk



Base map effective April, 2022

Map produced by Sebago Technics, Inc.  
for the Town of Raymond, January 2023

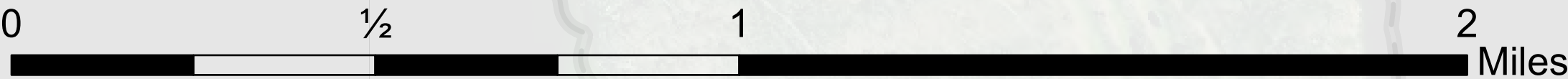
**Base Map Features**

- Raymond Town Line
- 2022 Parcels
- Water Bodies
- Stream

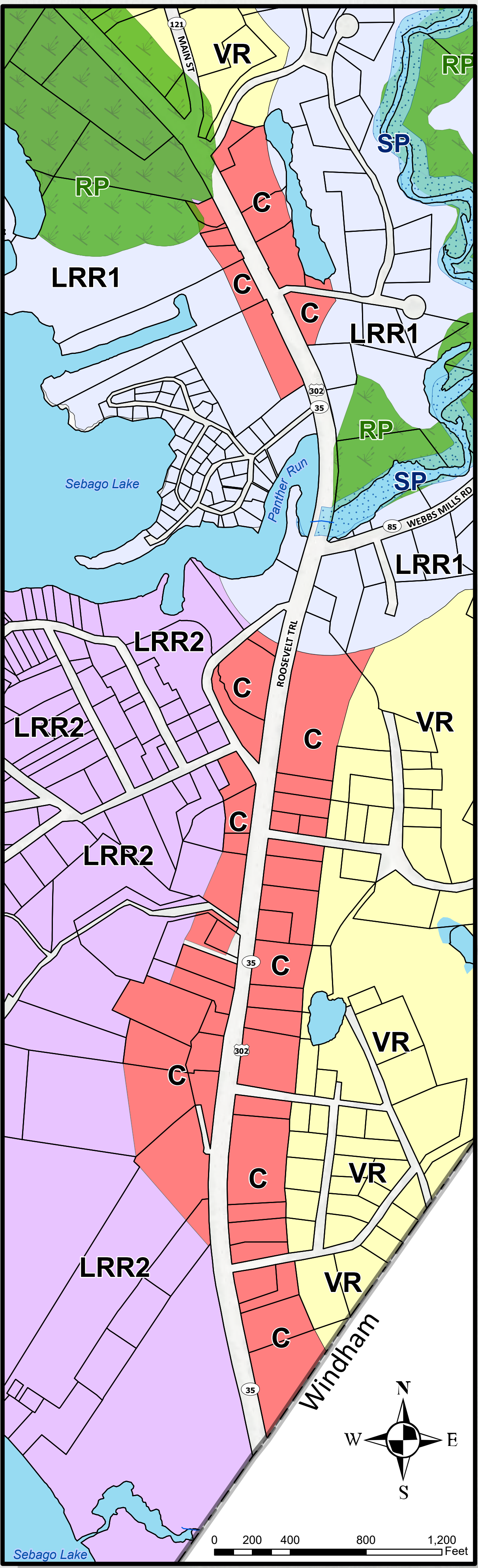
**Zoning Districts**

- RP - Resource Protection District
- SP - Stream Protection District
- C - Commercial
- I - Industrial
- LRR1 - 2 Acres
- LRR2 - 3 Acres
- R - Rural - 3 Acres
- RR - Rural Residential - 2 Acres
- RR-MH - Rural Residential - Mobile Home
- VR - Village Residential - 40,000 sq ft
- VR-MH - Village Residential - Mobile Home

1 inch = 1,000 feet



**Commercial District Inset Map**



Data Sources:  
Maine Office of GIS  
Town of Raymond:  
Code Enforcement  
Planning Department  
Assessor's Office  
NAD83 State Plane Maine West FT  
Transverse Mercator  
Prepared by:  
**SEBAGO**  
January 2023